

Quick Start Guide

Microinvest Archi Pro



2016

I. Application Installation from Internet

To obtain the Archi Pro software application, please go to [Microinvest Archi Pro](#) and follow the instructions to obtain your copy of the software package:

1. Download the application
2. Choose the directory you want to save the application in. Press **Save** button.
3. Wait for downloading the file.

II. Working with *Microinvest Archi Pro*

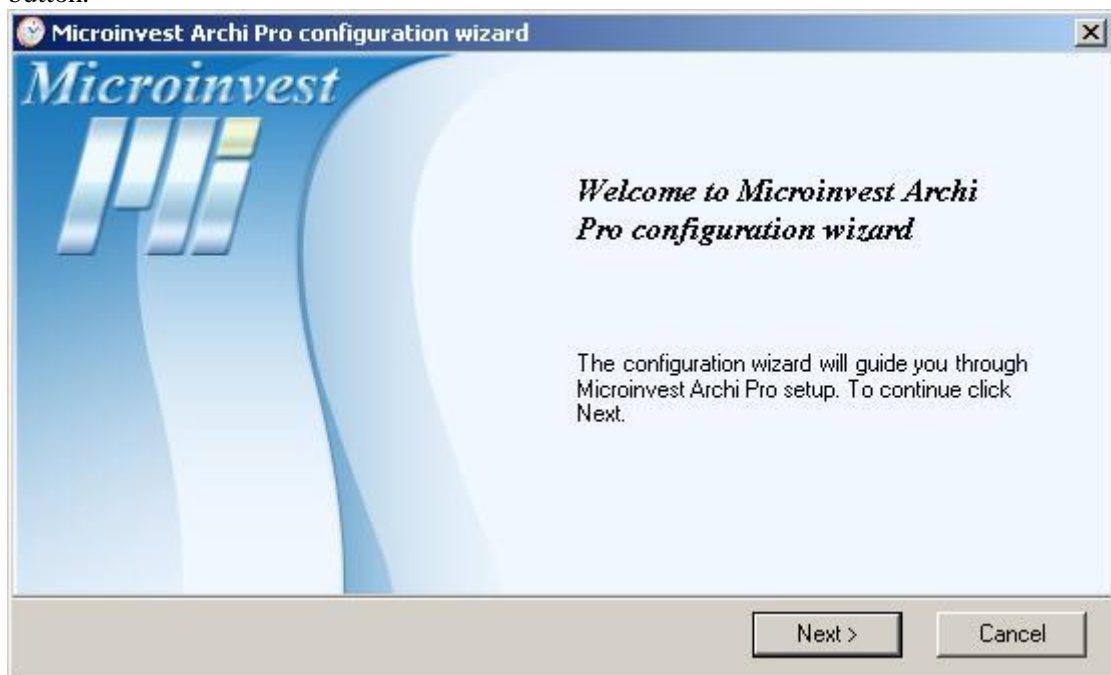
[Microinvest Archi Pro](#) is backup and archiving software program, which is developed to work with all [Microinvest Warehouse Pro](#) products. The application allows to periodically archiving records made in any SQL database used by the *Microinvest Warehouse Pro*. Frequency is as follows:

- Every hour (hourly);
- Every day (daily);
- Every week (weekly);
- Every month (monthly).

Users can set up the software program to keep archive history for last day (days); for last week (weeks) or for last month (months).

Installation of [Microinvest Archi Pro](#)

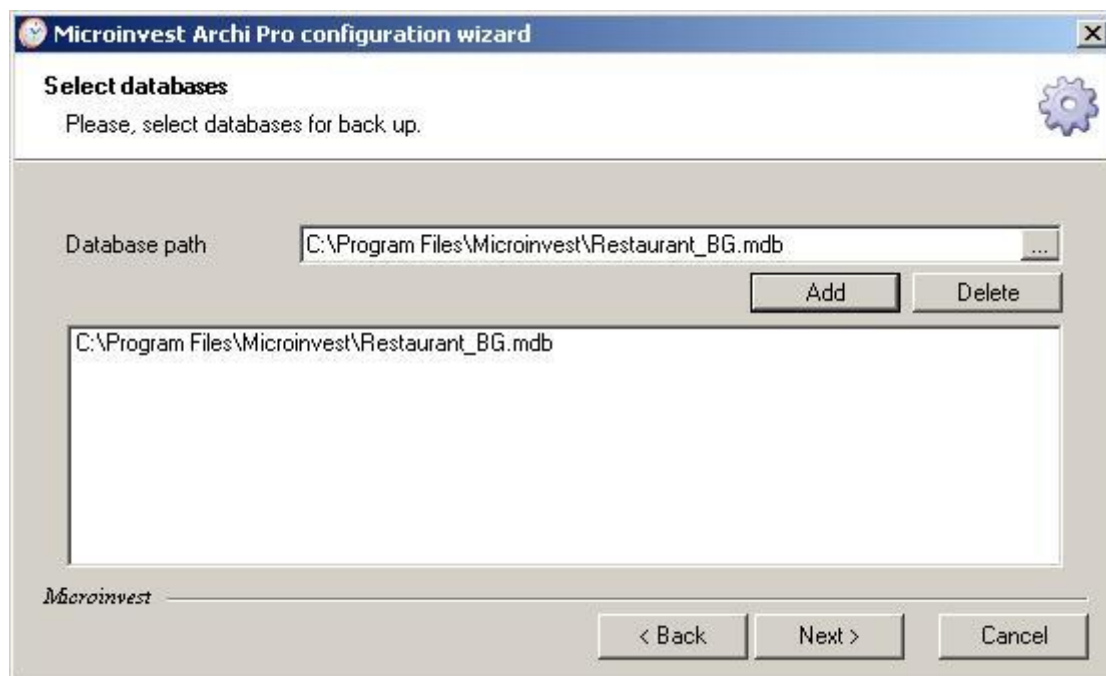
1. Start up the installation file.
2. *Microinvest Archi Pro* by default will be installed in **Program files** folder. If you prefer other folder, use **Browse** button to select the directory path. Then press **Next**.
3. Start up the program from **Start Menu**-> **Programs** -> *Microinvest Archi Pro*.
4. Assistant for configuration database access will launch. Press **Next** button.



5. Select the database type and press **Next**
- If you select SQL Server enter the **server name**, **username** and **password** to access the server.



6. Select the database you want to archive. Then press **Next**.



7. In the next window you can select the settings for archiving. Press **Next**.

The screenshot shows the 'Microinvest Archi Pro configuration wizard' window, specifically the 'Backup settings' step. The window title is 'Microinvest Archi Pro configuration wizard'. The main heading is 'Backup settings' with a gear icon. Below the heading, it says 'Please, select backup configuration settings.' The settings are as follows: 'Backup type' is set to 'Standard'; 'Max. backups allowed' is set to '200'; 'Set folder for the backup files.' is followed by 'Backup folder' set to 'C:\Program Files\Microinvest\Archi Pro\BackUp'; 'The backup file name consist of database name and date/time pattern.' is followed by 'Name pattern' set to 'yyyy_MM_dd_HH_mm_ss' and a text box containing 'BackUpFile_2009_10_08_17_27_15'; 'Compression level determine the size of the backup file.' is followed by 'Compression' set to 'Maximum'. At the bottom, there are three buttons: '< Back', 'Next >', and 'Cancel'. The Microinvest logo is in the bottom left corner.

8. Define the schedule for archiving and press **Next**.

The screenshot shows the 'Microinvest Archi Pro configuration wizard' window, specifically the 'Backup schedule' step. The window title is 'Microinvest Archi Pro configuration wizard'. The main heading is 'Backup schedule' with a gear icon. Below the heading, it says 'Please, select backup schedule.' The settings are as follows: 'Backup type' is set to 'Hourly'; 'Interval' is set to '1'; a text box on the right contains 'Backup will be performed every hour.'. At the bottom, there are three buttons: '< Back', 'Next >', and 'Cancel'. The Microinvest logo is in the bottom left corner.

9. Preview the settings. Then press **Next**.

10. If you want to archive the database at the moment, press **End**. Otherwise uncheck the box **Backup now** and then press **Finish**.



For further information, please feel free to send us an email with a specific question and we will be glad to assist you. Thank you for choosing *Microinvest*!

<http://en.microinvest.net/>