



Microinvest

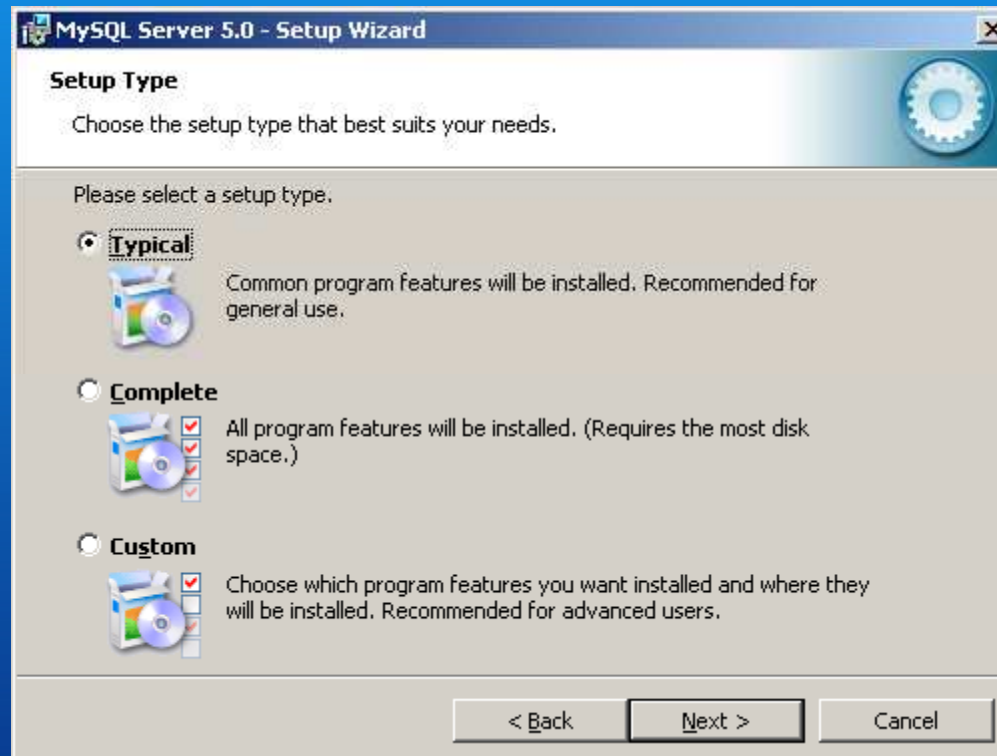
Installation of MySQL server

Installation - Step 1



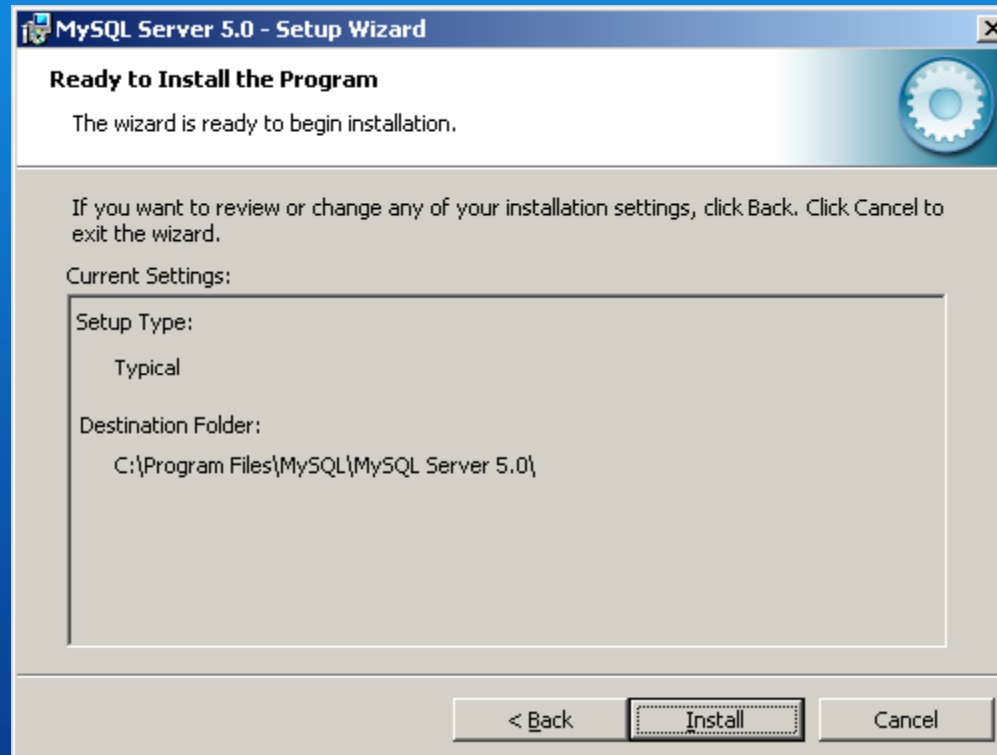
Start the installation file - setup.exe

Installation - Step 2



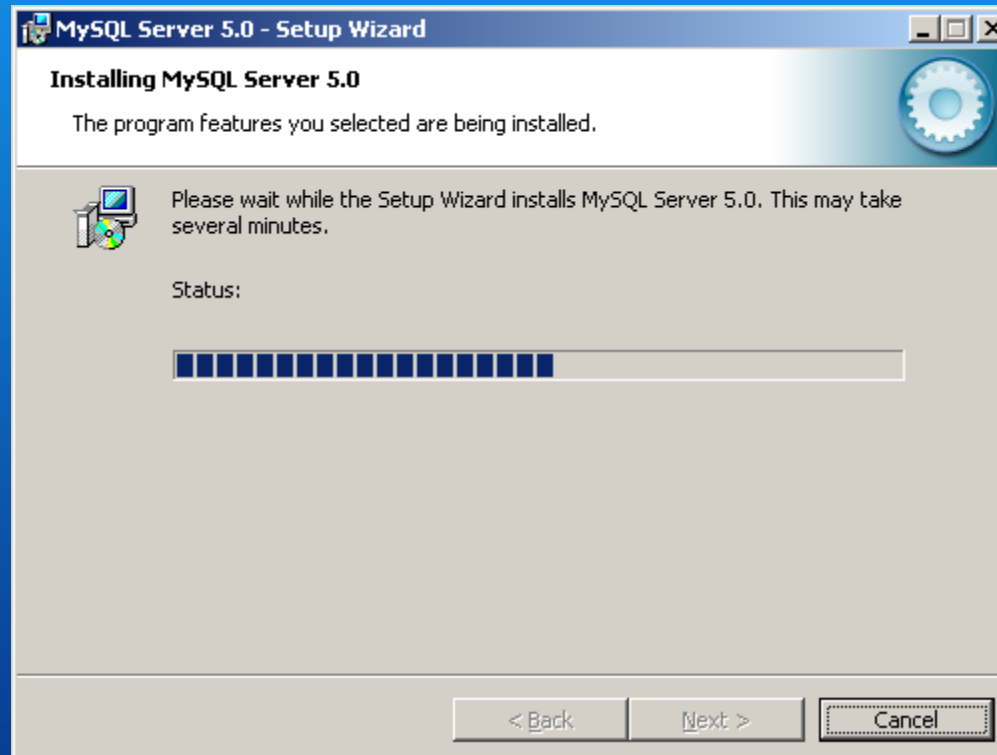
Choose type of installation - Typical

Installation - Step 3



Prepare the installation

Installation - Step 4



Installation process

Installation - Step 5

MySQL.com Sign Up - Setup Wizard

MySQL.com Sign-Up
Login or create a new MySQL.com account.

Please log in or select the option to create a new account.

Create a new free MySQL.com account
If you do not yet have a MySQL.com account, select this option and complete the following three steps.

Login to MySQL.com
Select this option if you already have a MySQL.com account. Please specify your login information below.

Email address:

Password:

Skip Sign-Up

Next > Cancel

Registration - Skip Sign Up

Installation - Step 6



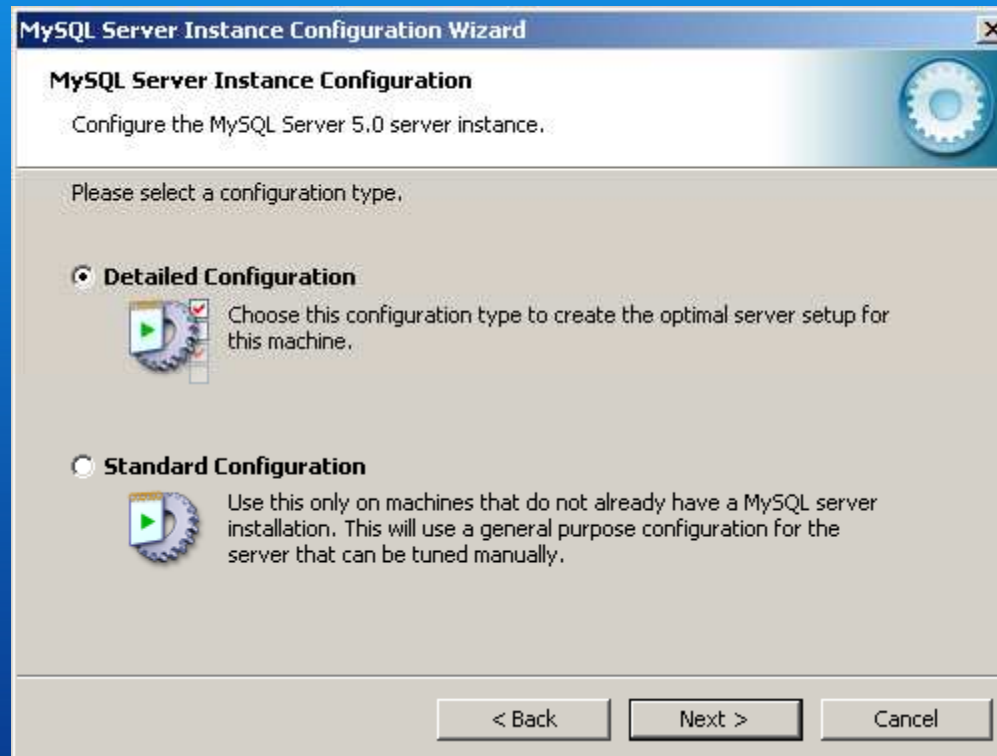
Complete the installation by choosing the configuration of the MySQL server

Configuration - Step 1



Start the configuration Wizard

Configuration - Step 2



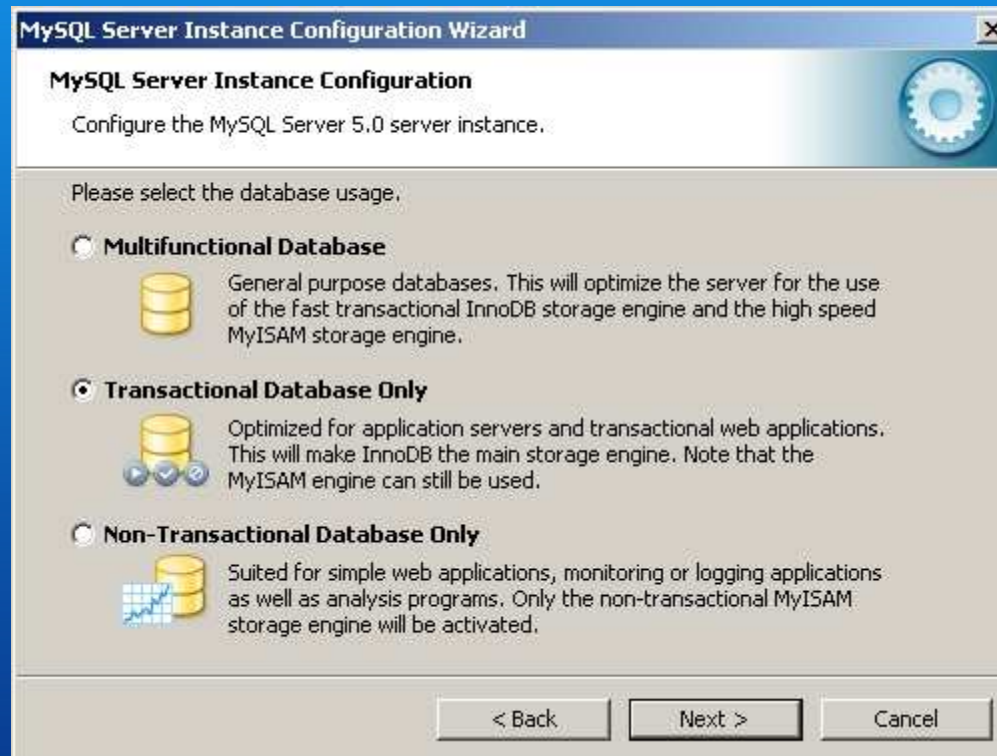
Choose the type of configuration -
Detailed Configuration

Configuration - Step 3



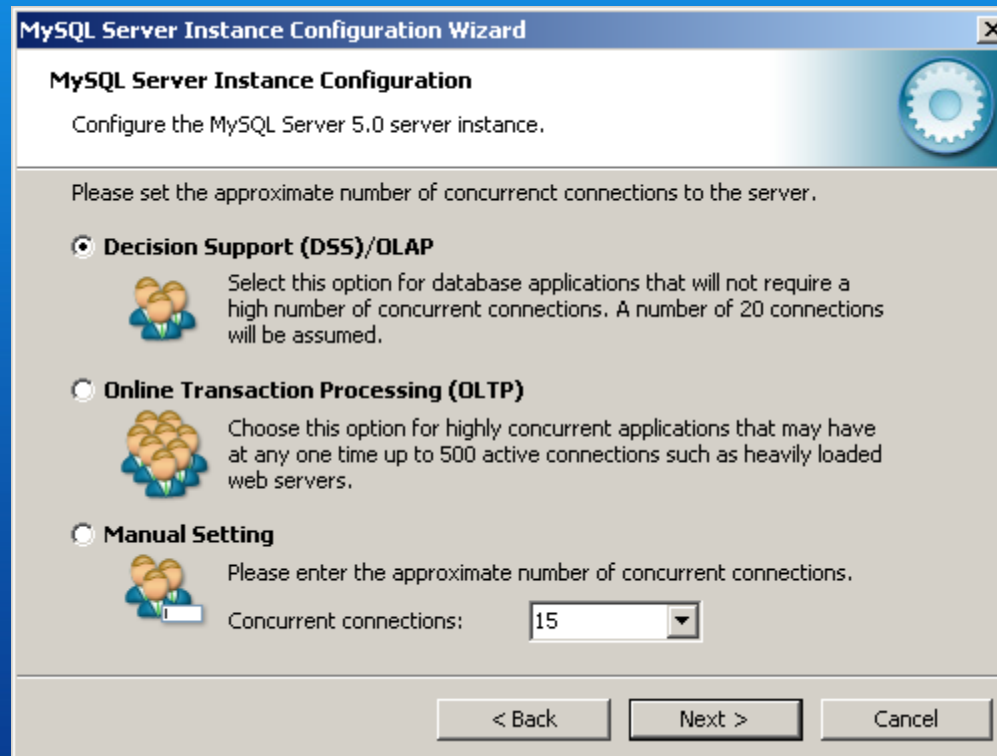
Choose the type of server - Server Machine

Configuration - Step 4



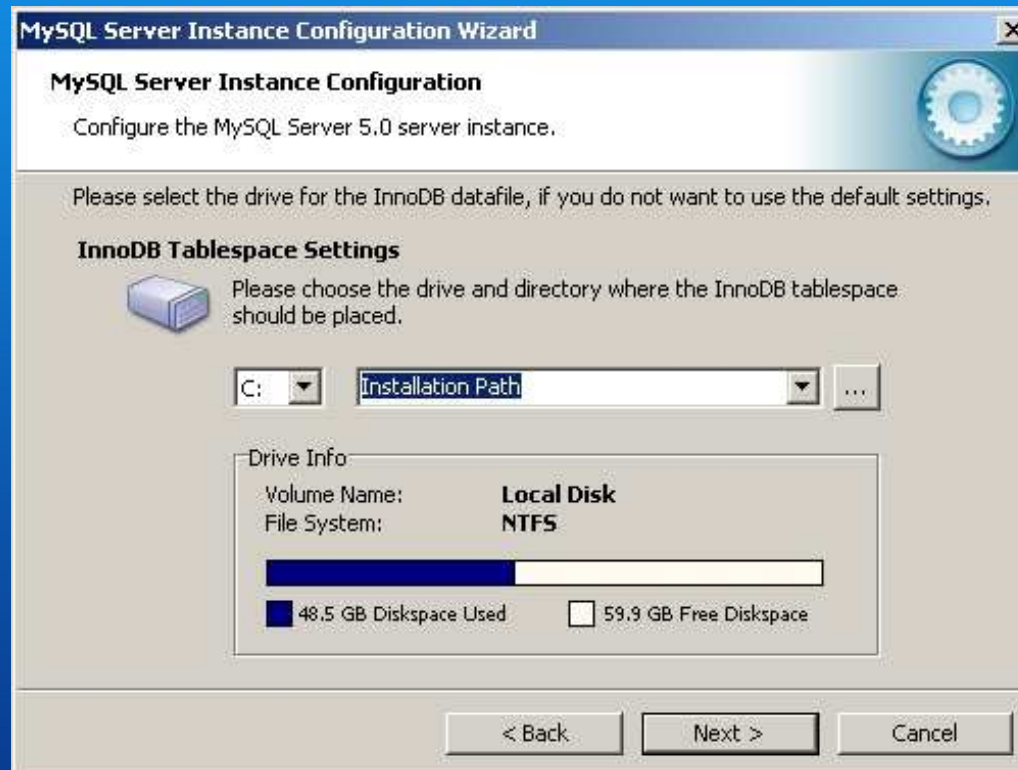
Select the type of database to be installed -
Transactional Database Only

Configuration - Step 5



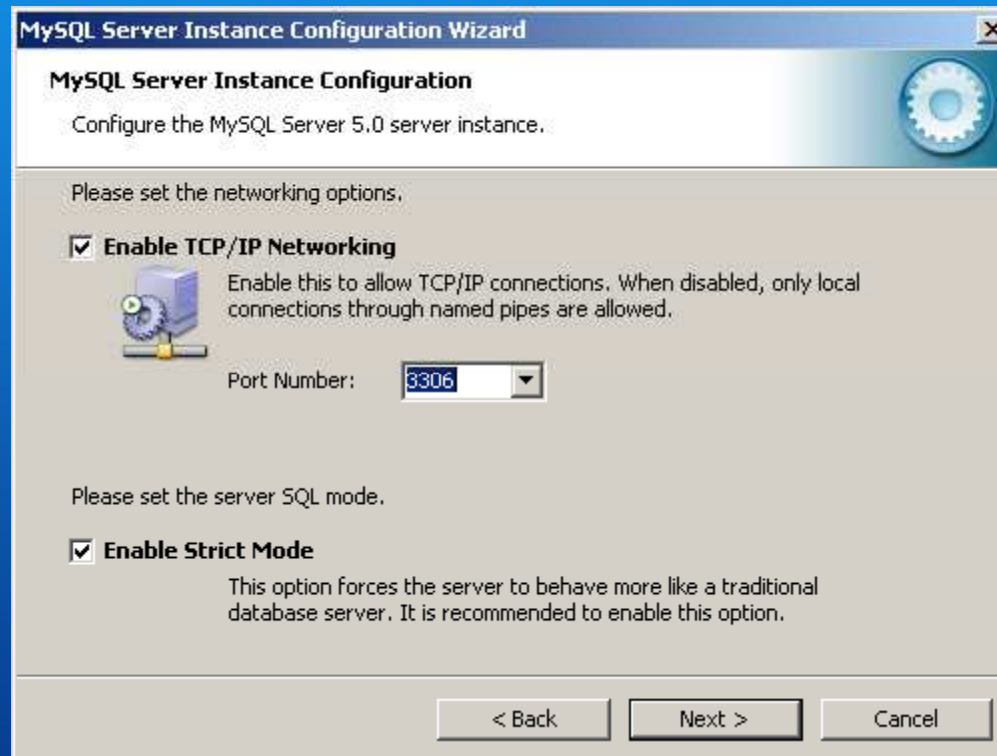
Configuration based on the number of working places -
Decision Support (DSS)/OLAP

Configuration - Step 6



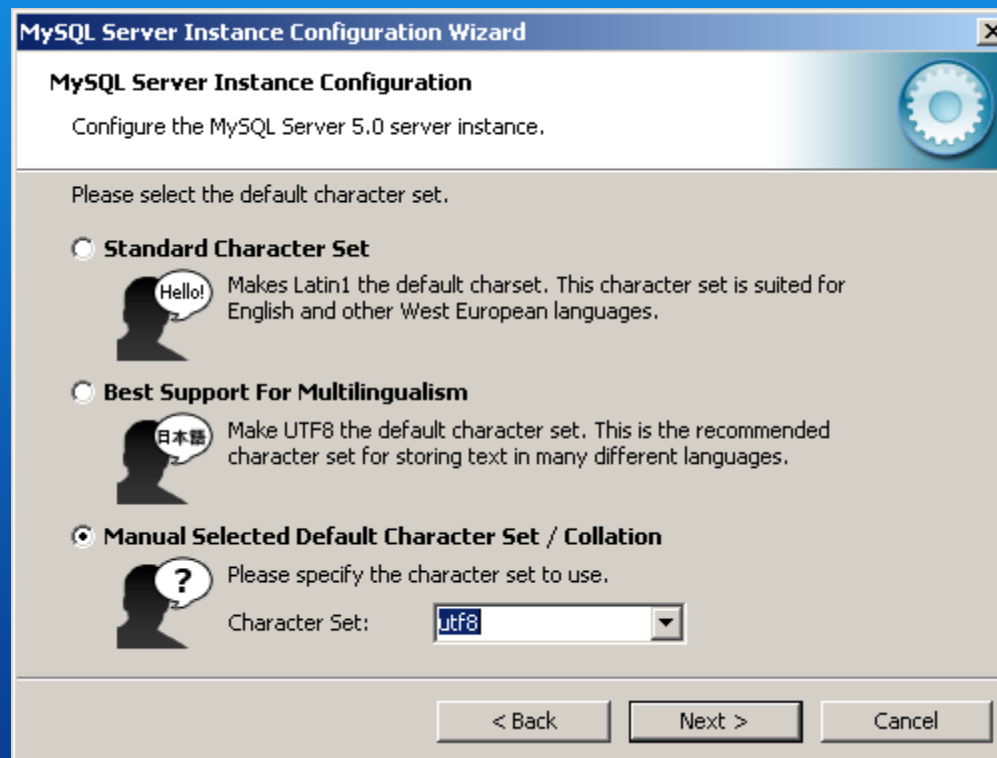
Selection of the location of InnoDB file - C: Installation Path

Configuration - Step 7



- Configuring the type of connection - Enabled TCP/IP Networking
- Configuring a connection port 3306

Configuration - Step 8



Configuring the code table -
Character Set: utf8

Configuration - Step 9



Configuring the Windows settings of the server –
Choose Install As Windows Service and Service Name: MySQL
Choose Include Bin Directory in Windows PATH

Configuration - Step 10

MySQL Server Instance Configuration Wizard

MySQL Server Instance Configuration
Configure the MySQL Server 5.0 server instance.

Please set the security options.

Modify Security Settings

 New root password: Enter the root password.

 Confirm: Retype the password.

Enable root access from remote machines

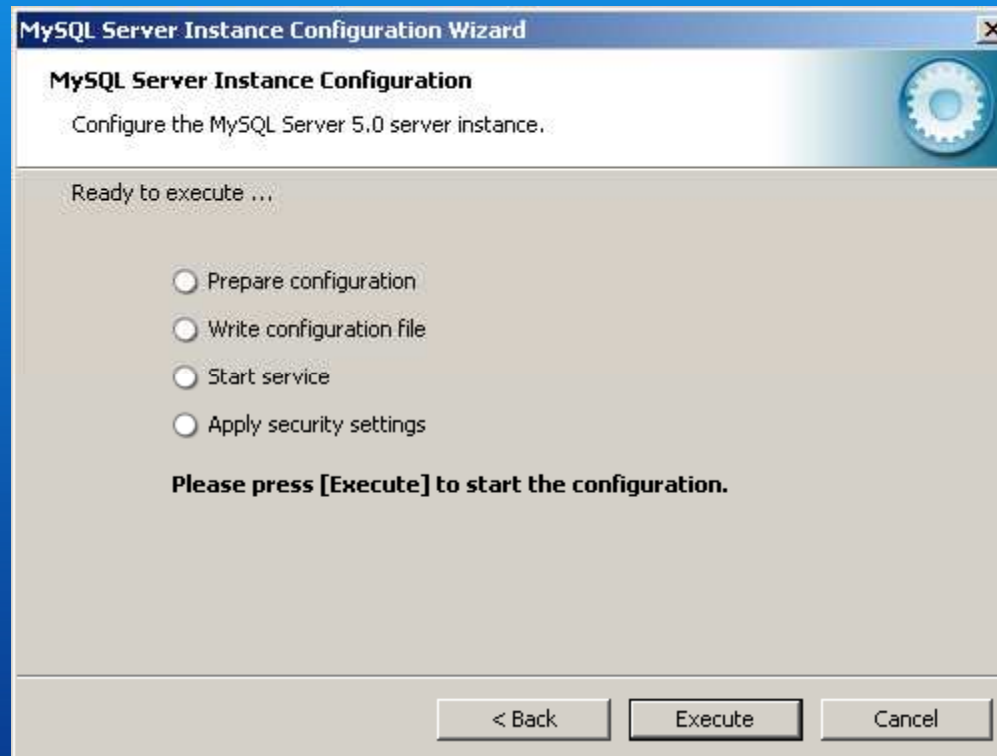
Create An Anonymous Account

 This option will create an anonymous account on this server. Please note that this can lead to an insecure system.

< Back Next > Cancel

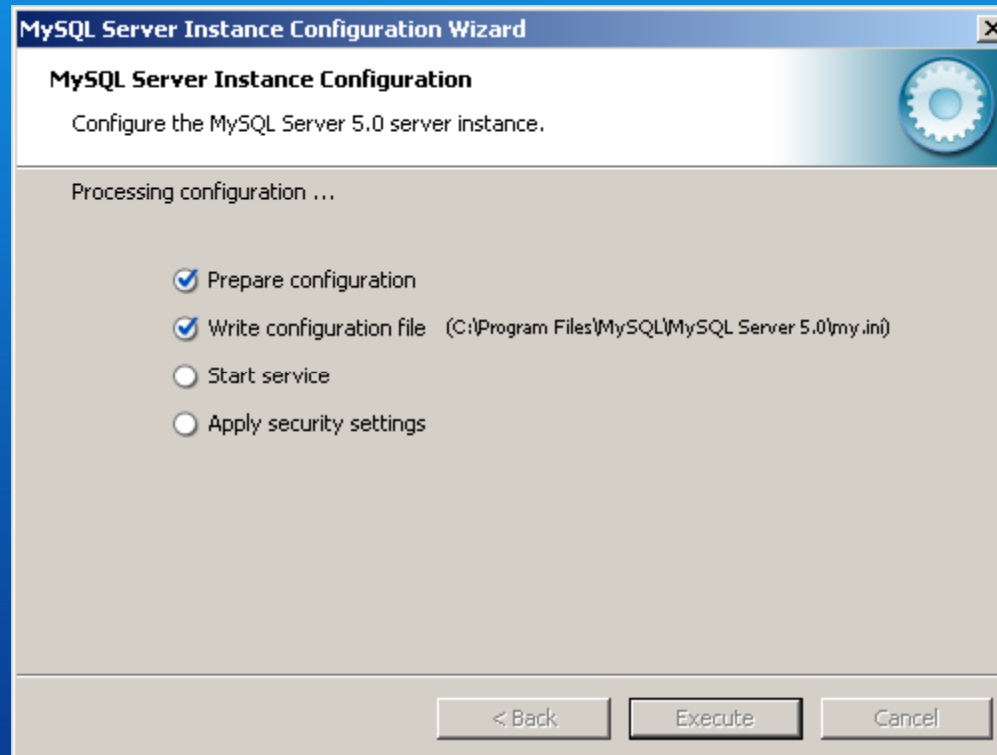
Set a password: passw0rd
Choose Enabled root access from remote machine

Configuration - Step 11



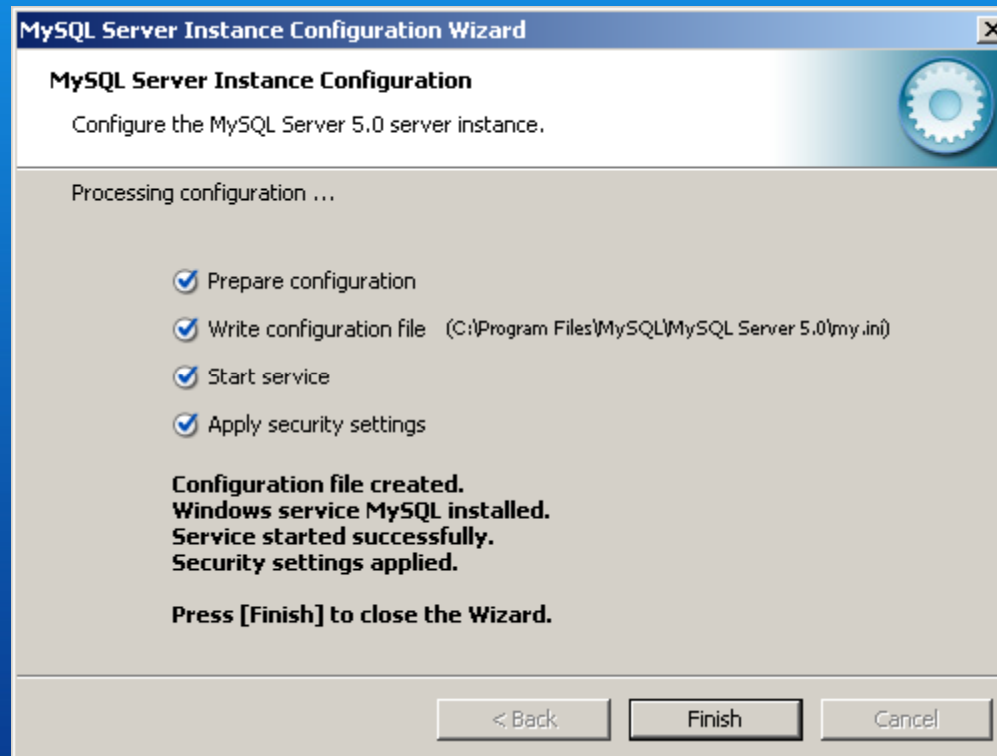
Preparation for execution of the set configuration parameters

Configuration - Step 12



Execution of the set configuration parameters

Configuration - Step 13



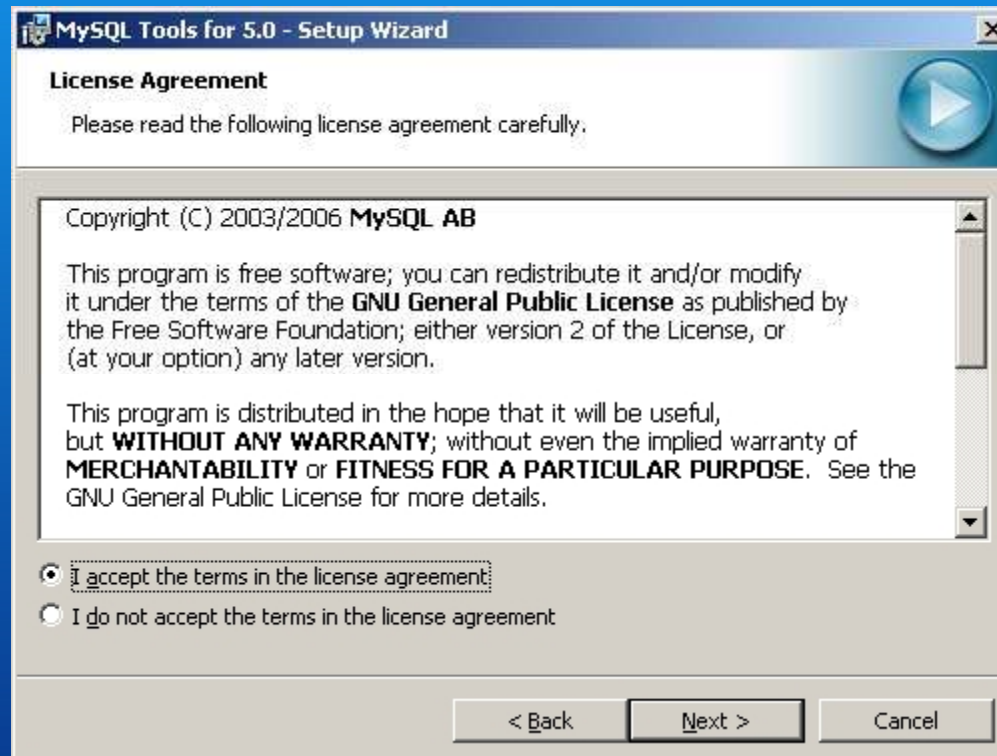
Completing the configuration process

Installation of MySQL Features - Step 1



Installation of MySQL Tools - starting the
MySQL_Tools.msi

Installation of MySQL Features - Step 2



Accept the license agreement

Installation of MySQL Features - Step 3



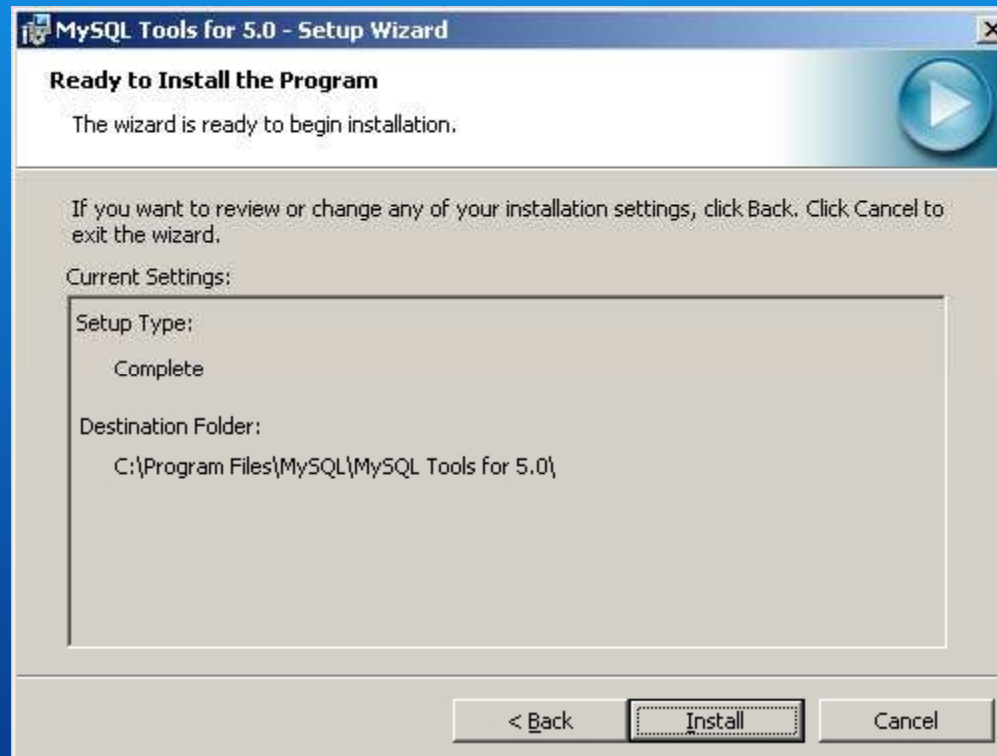
Confirm the installation folder

Installation of MySQL Features - Step 4



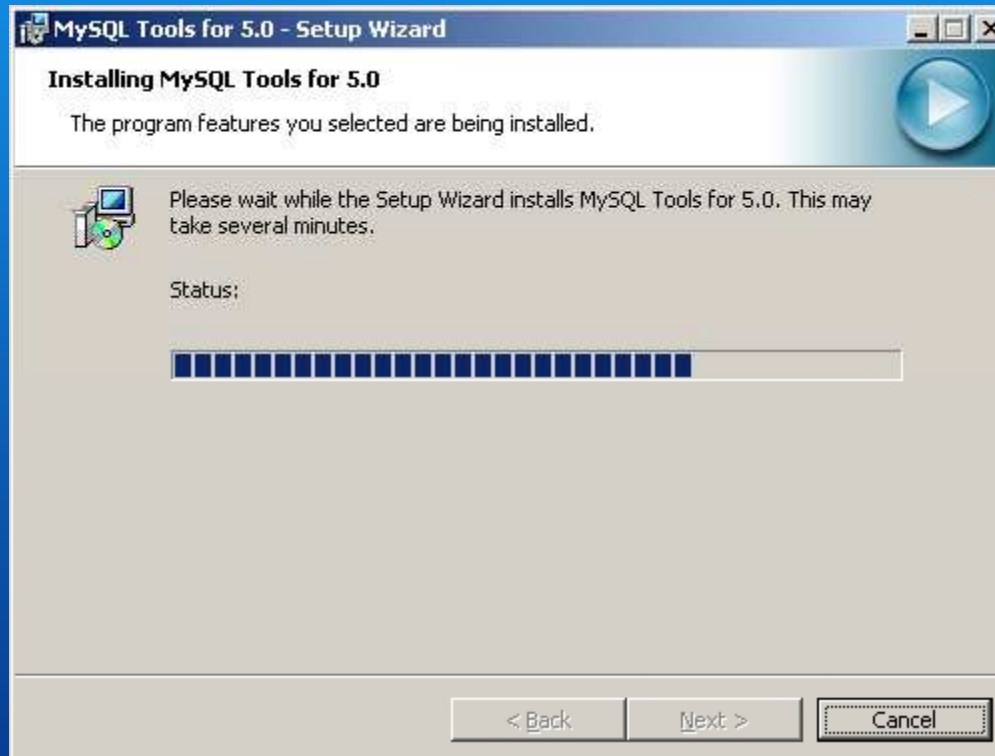
Choose the type of the installation - Complete

Installation of MySQL Features - Step 5



Starting the installation process

Installation of MySQL Features - Step 6



Installation of the instruments

Installation of MySQL Features - Step 7



Complete the installation

Thank you for choosing Microinvest Warehouse Pro!

We look forward to working with you.

www.microinvest.net